



2017 COASTAL MASTER PLAN



2017 COASTAL MASTER PLAN

BUILDING ON OUR COMMITMENT TO PROTECT AND RESTORE OUR COAST

Restoration Leadership Roundtables



Bren Haase | October 2016

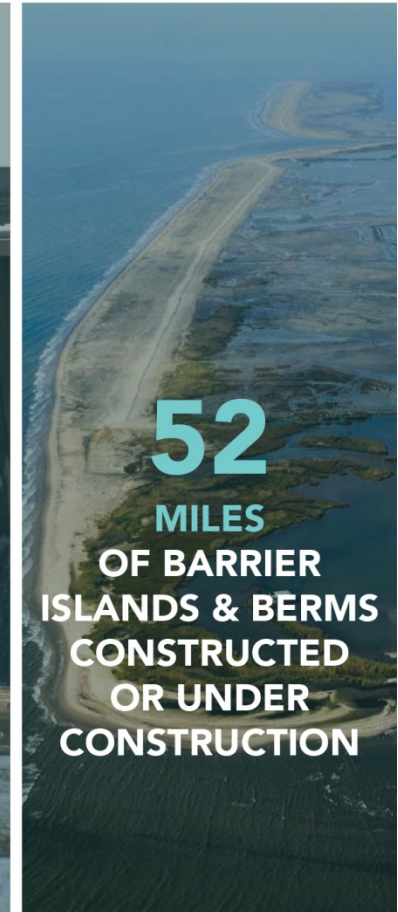
COASTAL PROTECTION AND RESTORATION AUTHORITY

Single state entity with authority to articulate a clear statement of priorities to achieve comprehensive coastal protection for Louisiana.

Mandate is to develop, implement, and enforce a comprehensive coastal protection and restoration Master Plan.



RESPONDING TO THE CRISIS: LOUISIANA'S COASTAL PROGRAM SINCE 2007

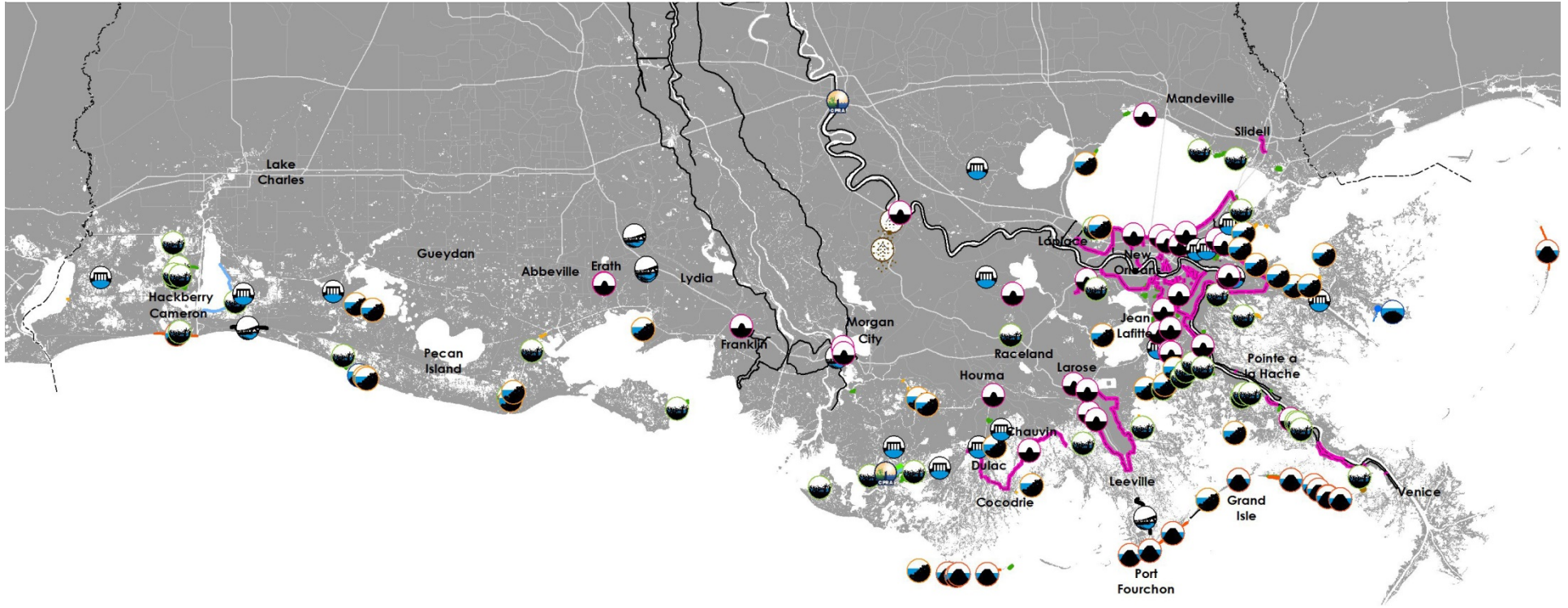




Projects Constructed / In Construction

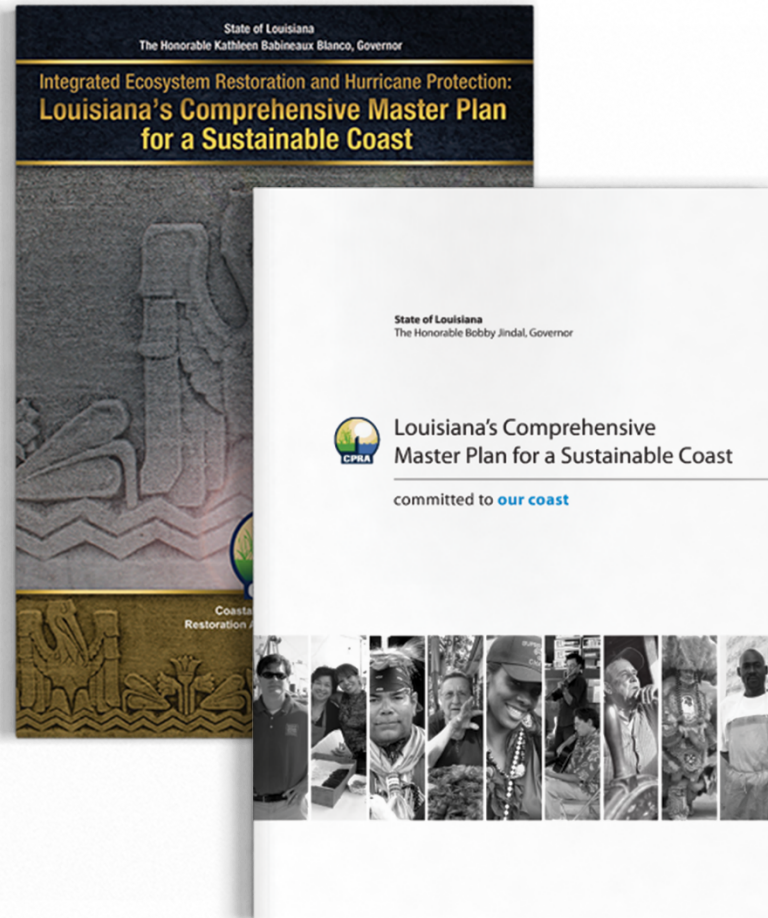
Coast wide

2007 – FY 2017

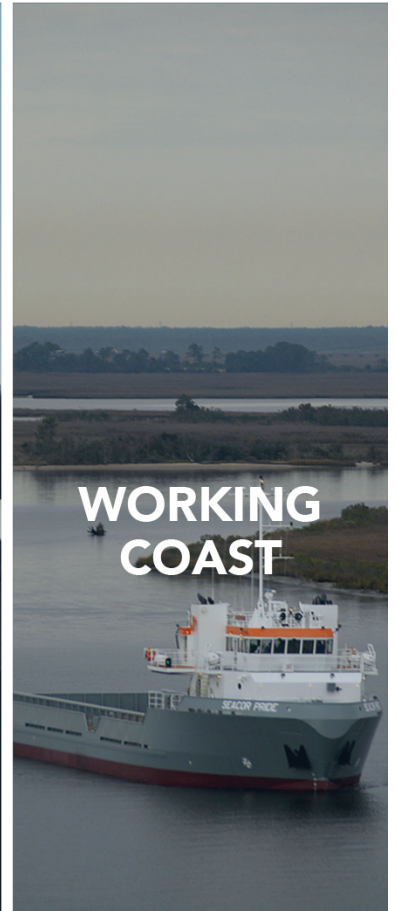


SO WHY ANOTHER PLAN?

- It is required by law to be updated every five years
- Allows the state to respond to changes on the ground and public input as well as innovations in science, engineering, and policy
- Advances a comprehensive and integrated approach to protecting and restoring the communities of Coastal Louisiana

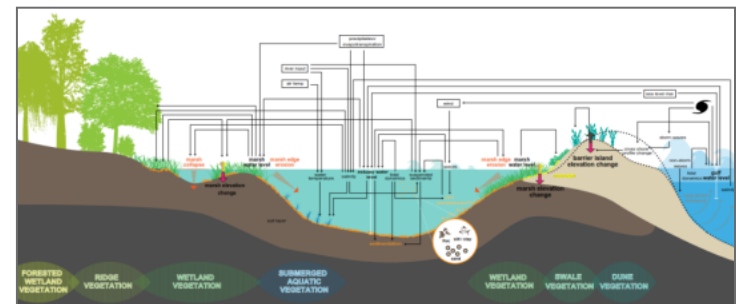
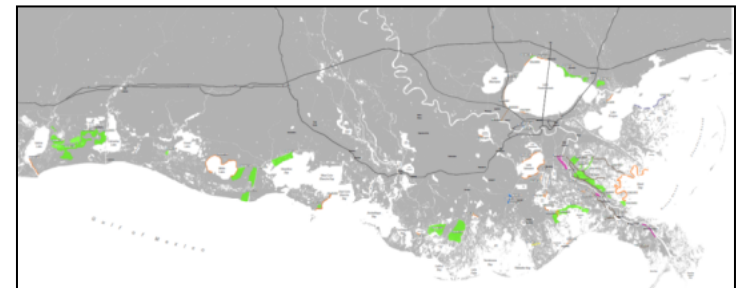


OBJECTIVES OF THE COASTAL MASTER PLAN



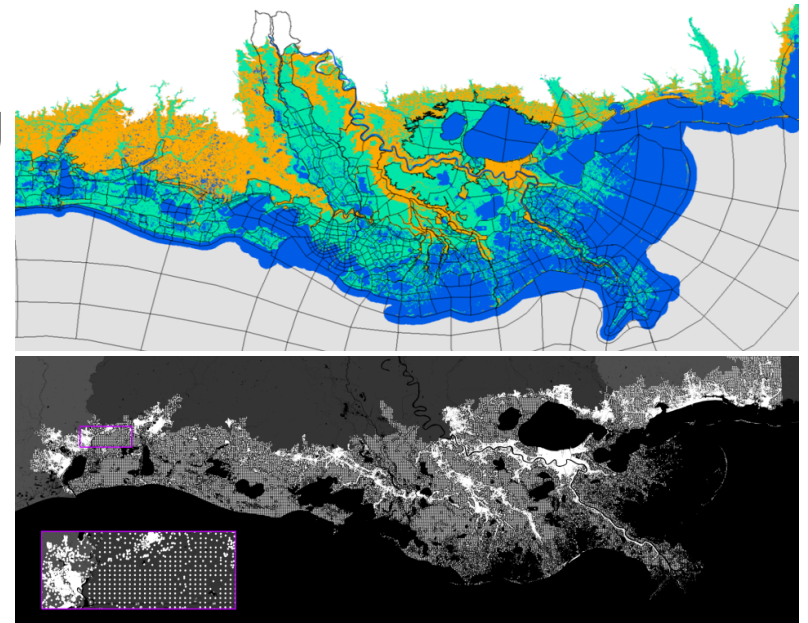
WHAT WILL BE DIFFERENT ABOUT THE 2017 COASTAL MASTER PLAN?

- Improved technical analysis
- Incorporating new ideas and information
- Focus on flood risk reduction and resilience
- Emphasis on communities



IMPROVED SCIENCE AND TECHNICAL ANALYSIS

- Major Improvements
 - Integrated landscape and ecosystem components
 - Increased spatial resolution/extent
 - Improved/added processes (sediment distribution and marsh edge erosion)
 - Enhanced fish/shellfish modeling
 - Improved asset data
- Primary Model Components
 - Landscape
 - Ecosystem
 - Risk reduction



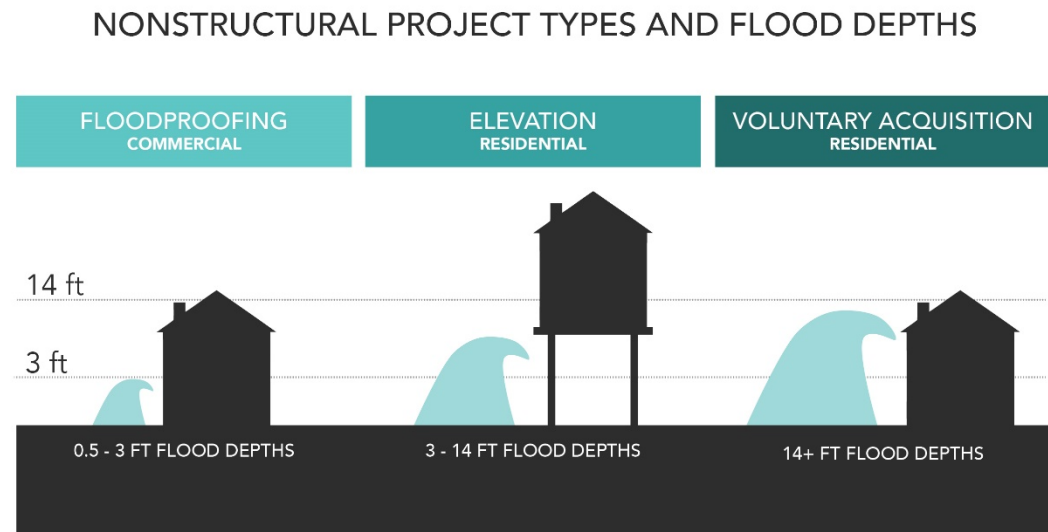
INCORPORATING NEW IDEAS AND INFORMATION

- 2012 Coastal Master Plan considered projects that were previously proposed and included in prior planning efforts
- In order to capture new project ideas, CPRA encouraged individuals and organizations to submit those ideas for consideration
 - 150 projects submitted
- Projects that met the required criteria are being evaluated for the 2017 Coastal Master Plan



FOCUS ON FLOOD RISK REDUCTION AND RESILIENCE

- CPRA is developing a framework to implement both nonstructural projects and programmatic measures to provide a comprehensive approach to flood risk reduction for homes, businesses, and community assets.
- Program Framework
 1. Develop Data and Tools
 2. Provide Information
 3. Provide Options
 4. Create Platforms for Collaboration and Action



EMPHASIS ON COMMUNITIES

- Reviewing long-term shifts in population
- Understanding the impacts of coastal land loss and flood risk on communities and resources
- Developing metrics to understand social vulnerability, flood protection of historic properties, and how best to support and maintain our traditional fishing, agricultural, and oil and gas communities



A FRAMEWORK TO MAKE DECISIONS

THE ANALYTICAL CHALLENGE

- Complex Coastal Environment
- 50 Year Planning Horizon
- Uncertain Future Scenarios
- Multiple Project Types
- Diverse Community Needs

NO OPTIMAL SOLUTIONS

- Risk Reduction (Structural or Nonstructural) vs. Restoration
- Near-Term Benefits vs. Long-Term Sustainability
- Different Stakeholder Preferences

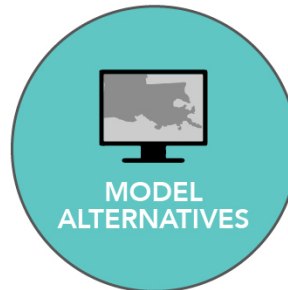
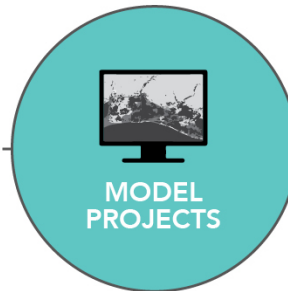


DEVELOPING THE COASTAL MASTER PLAN

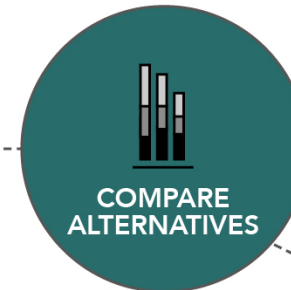
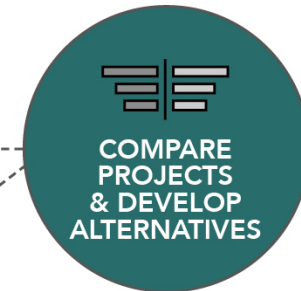
COASTAL PROJECTS



PREDICTIVE MODELS



PLANNING TOOL



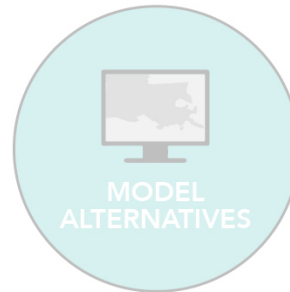
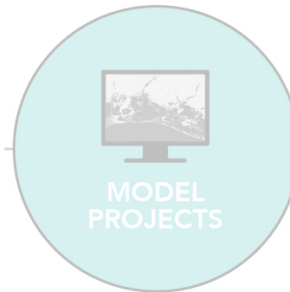
OUTREACH & ENGAGEMENT

DEVELOPING THE COASTAL MASTER PLAN

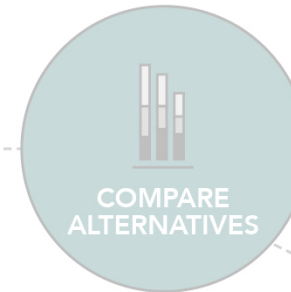
COASTAL PROJECTS



PREDICTIVE MODELS



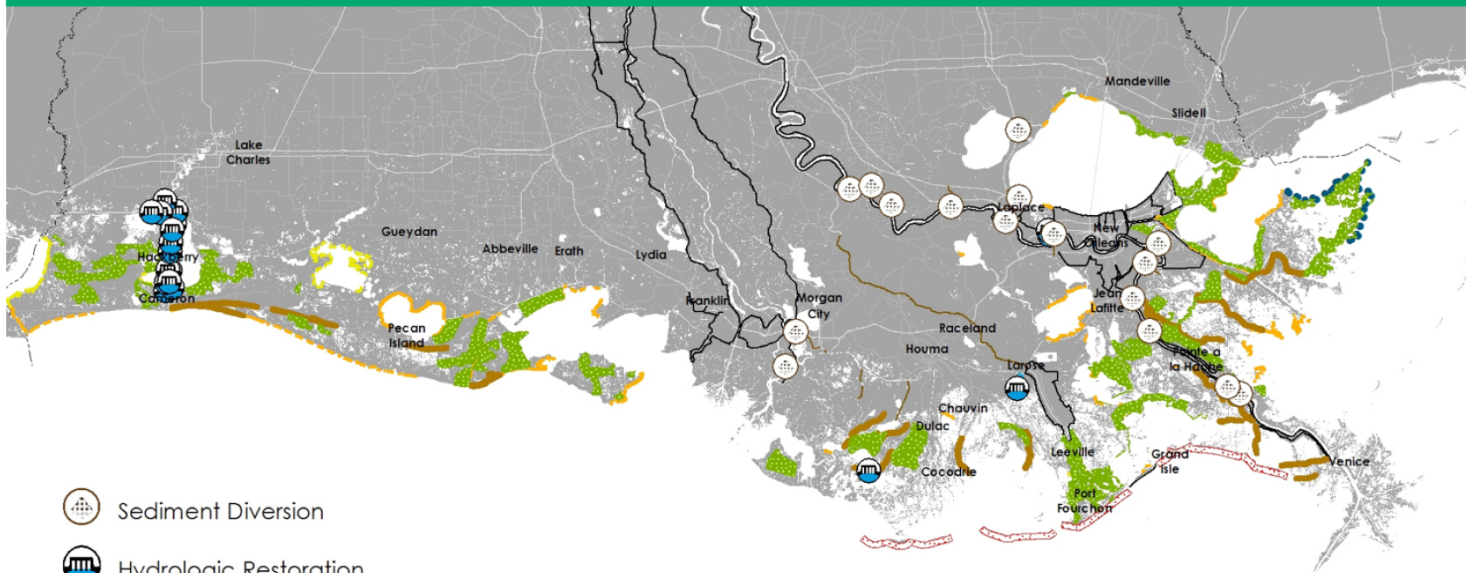
PLANNING TOOL



OUTREACH & ENGAGEMENT

PLANNING FRAMEWORK

COASTAL PROJECTS



-  Sediment Diversion
-  Hydrologic Restoration
-  Marsh Creation
-  Bank Stabilization
-  Ridge Restoration
-  Shoreline Protection
-  Oyster Barrier Reef
-  Barrier Island

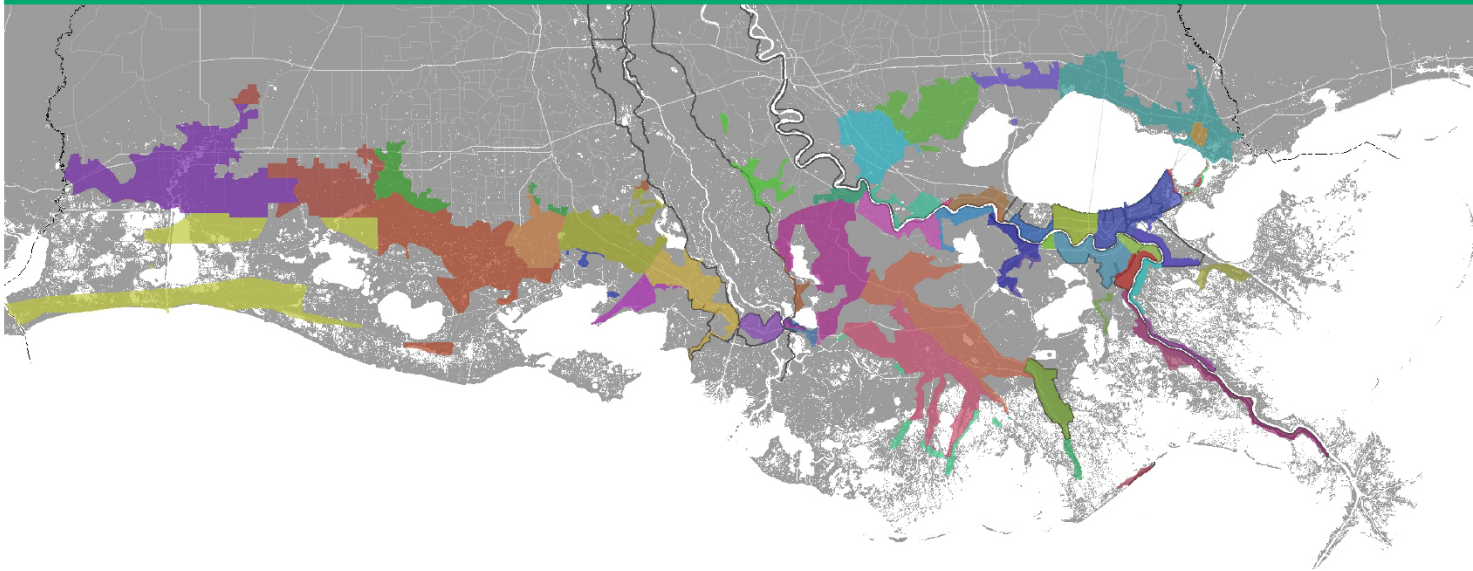
133
RESTORATION

54
NONSTRUCTURAL
PROTECTION

20
STRUCTURAL
PROTECTION

PLANNING FRAMEWORK

COASTAL PROJECTS



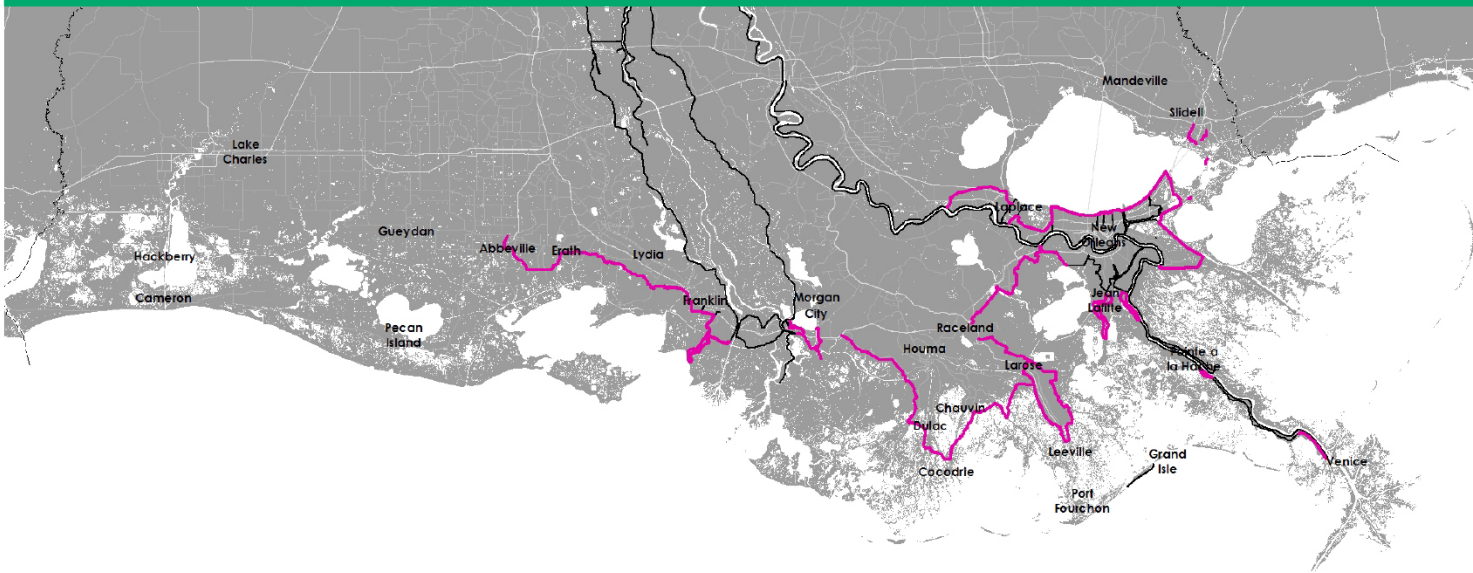
133
RESTORATION

54
NONSTRUCTURAL
PROTECTION

20
STRUCTURAL
PROTECTION

PLANNING FRAMEWORK

COASTAL PROJECTS

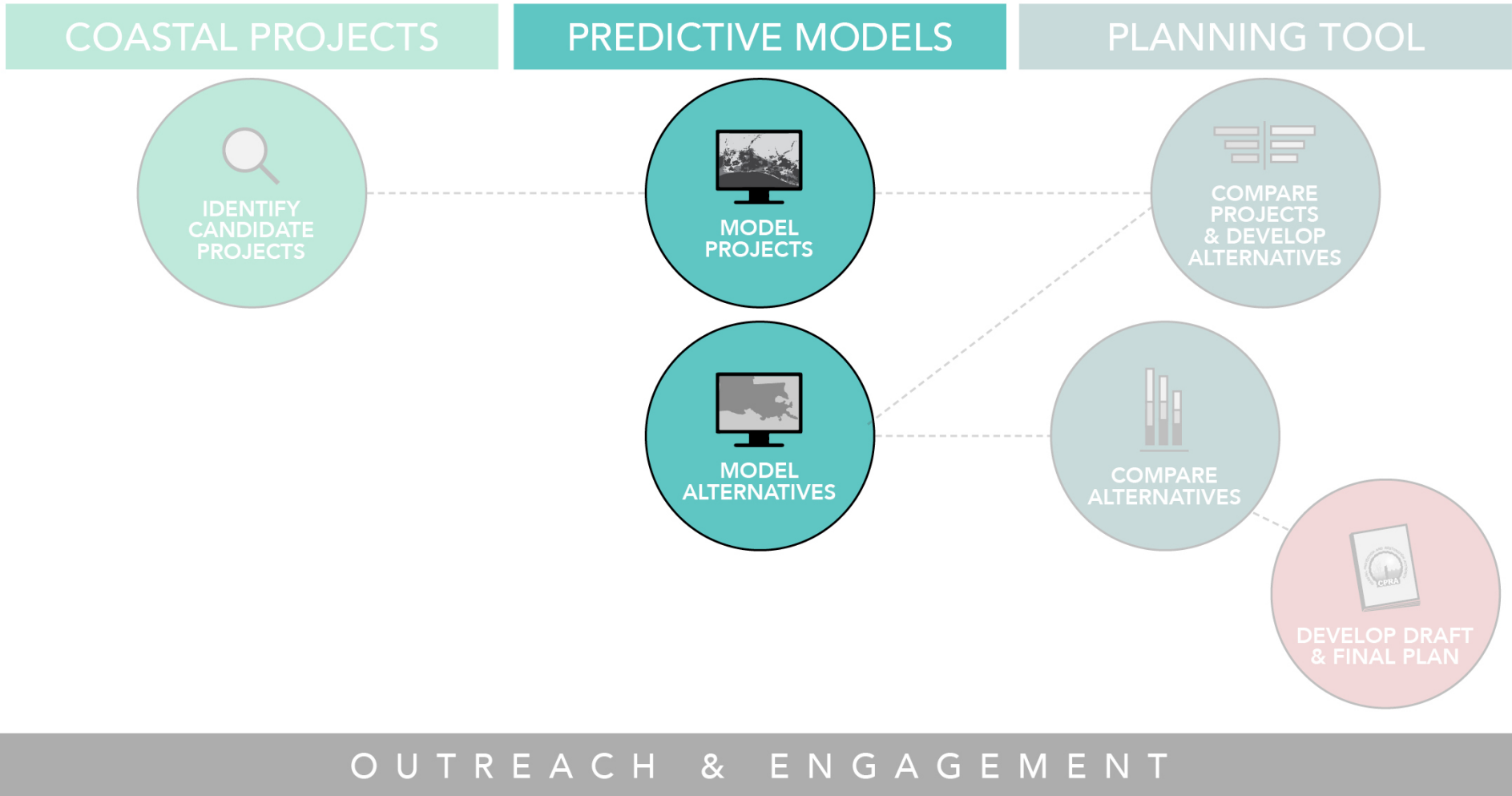


133
RESTORATION

54
NONSTRUCTURAL
PROTECTION

20
STRUCTURAL
PROTECTION

DEVELOPING THE COASTAL MASTER PLAN



PLANNING FRAMEWORK

PREDICTIVE MODELS

INTEGRATED COMPARTMENT MODEL



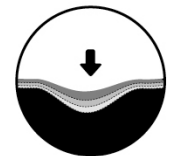
ENVIRONMENTAL AND RISK SCENARIOS



PRECIPITATION



EVAPOTRANSPIRATION



SUBSIDENCE

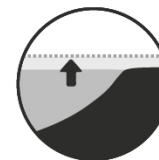
SURGE/WAVES AND RISK ASSESSMENT MODEL



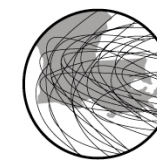
STORM SURGE/
WAVES



RISK
ASSESSMENT



SEA LEVEL RISE






STORM FREQUENCY



STORM INTENSITY

OUTREACH & ENGAGEMENT

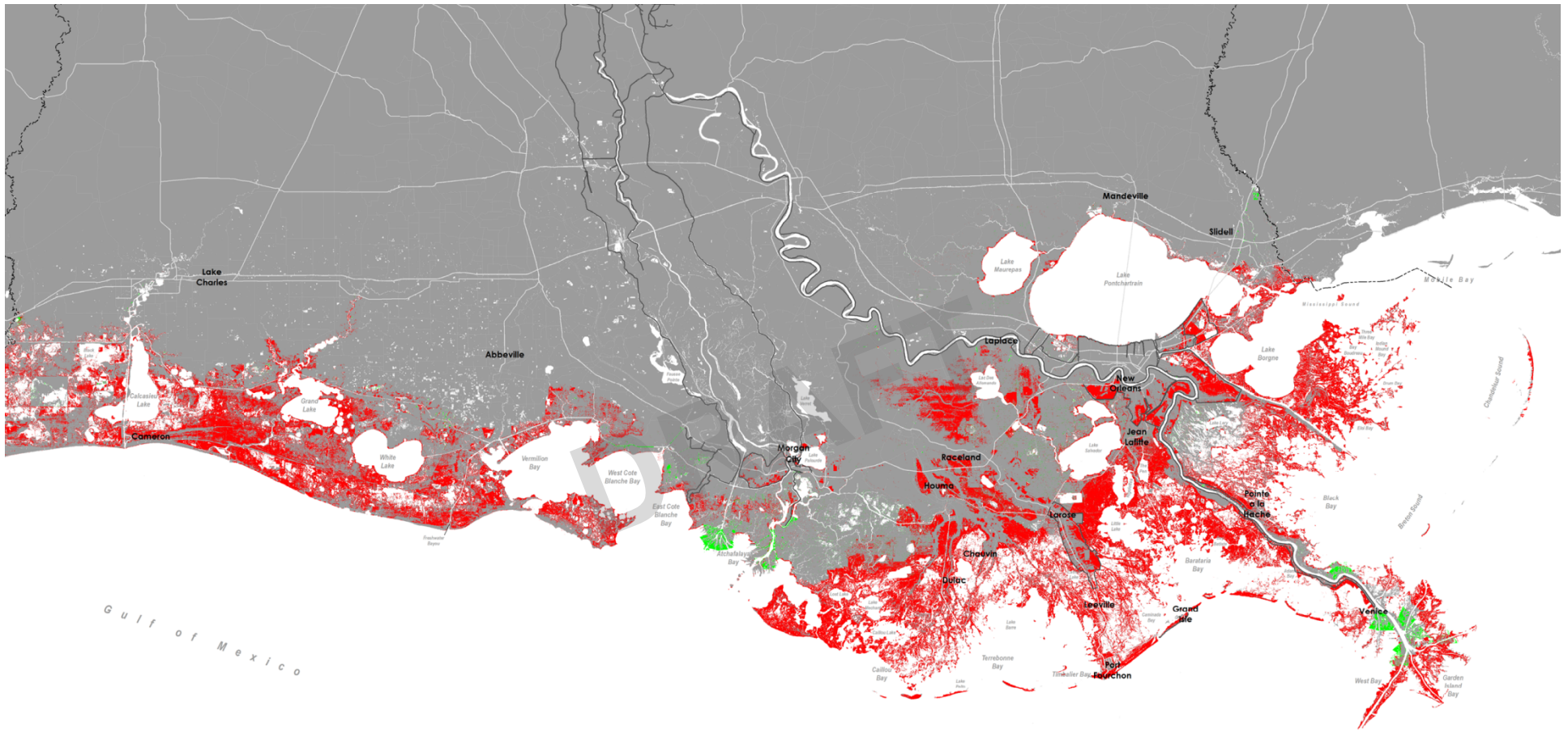
ENVIRONMENTAL SCENARIOS

SCENARIO	 PRECIP	 ET	 SEA LEVEL RISE	 SUBSIDENCE	 STORM FREQUENCY	 AVG. STORM INTENSITY
2017 COASTAL MASTER PLAN						
LOW	>HISTORICAL	<HISTORICAL	1.41'	20% OF RANGE	-28%	+10.0%
MEDIUM	>HISTORICAL	HISTORICAL	2.07'	20% OF RANGE	-14%	+12.5%
HIGH	HISTORICAL	HISTORICAL	2.72'	50% OF RANGE	0%	+15.0%

(FEET/50 YEARS)

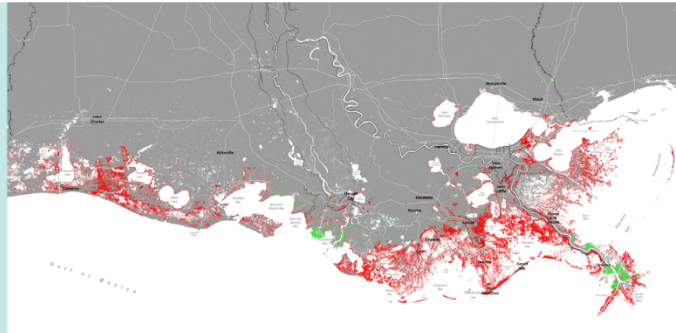
PREDICTED LAND CHANGE

FUTURE WITHOUT ACTION - YEAR 50, MEDIUM SCENARIO

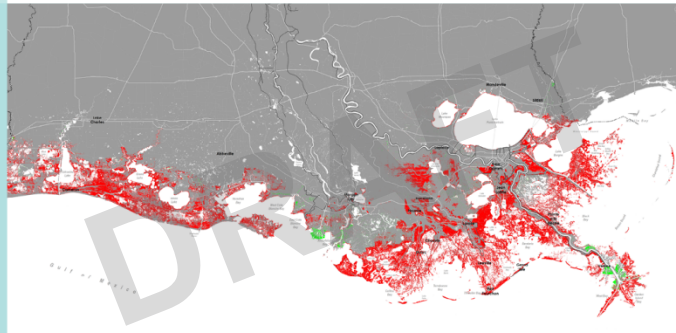


PREDICTED LAND CHANGE FUTURE WITHOUT ACTION - YEAR 50

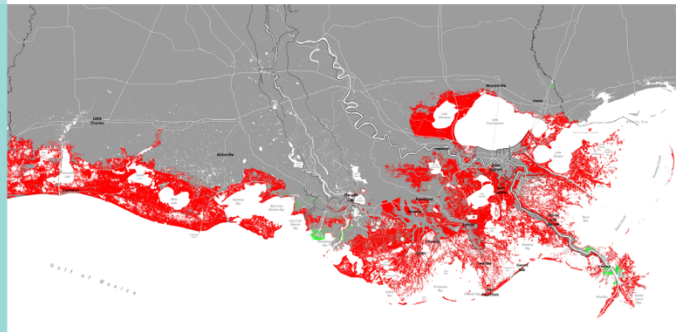
LOW



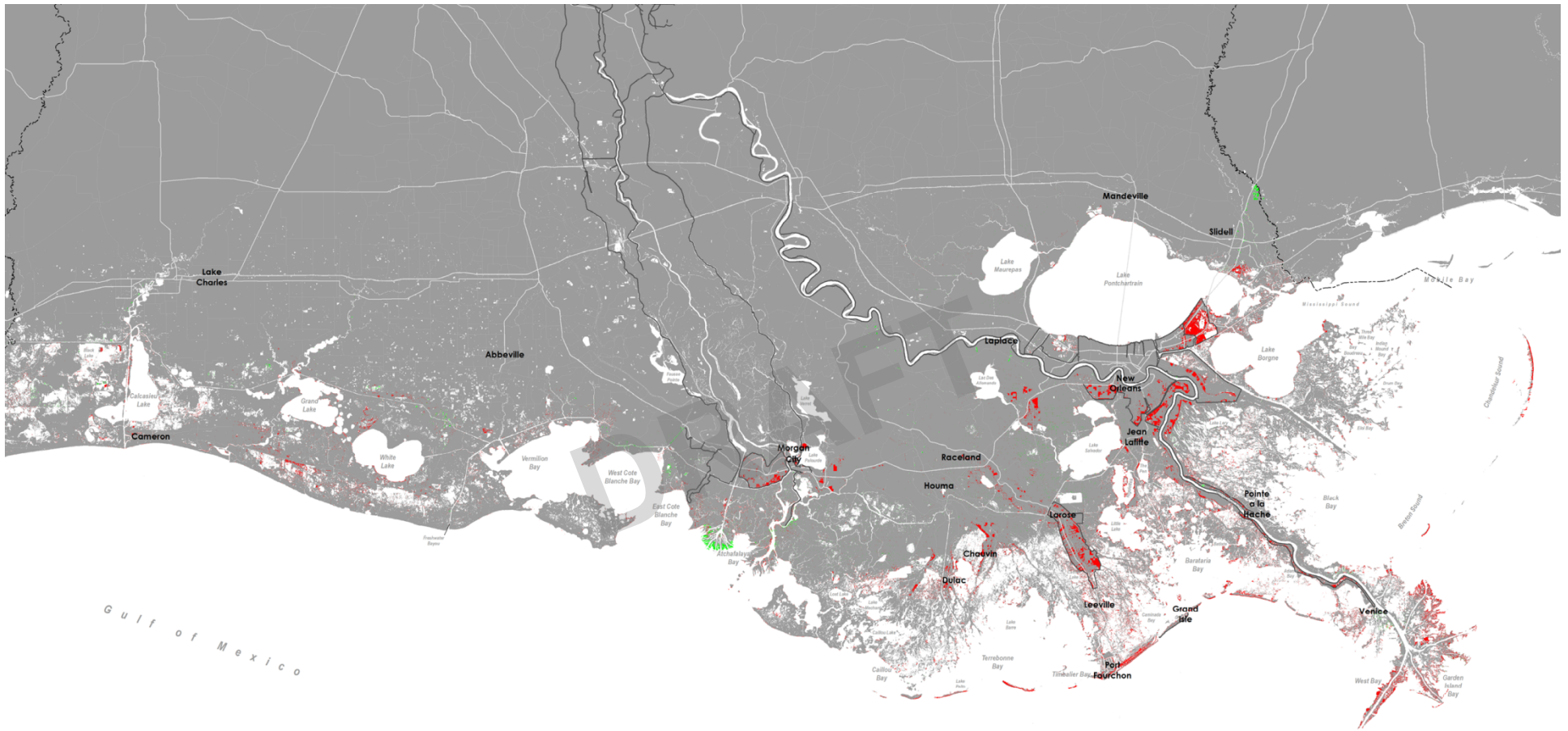
MEDIUM



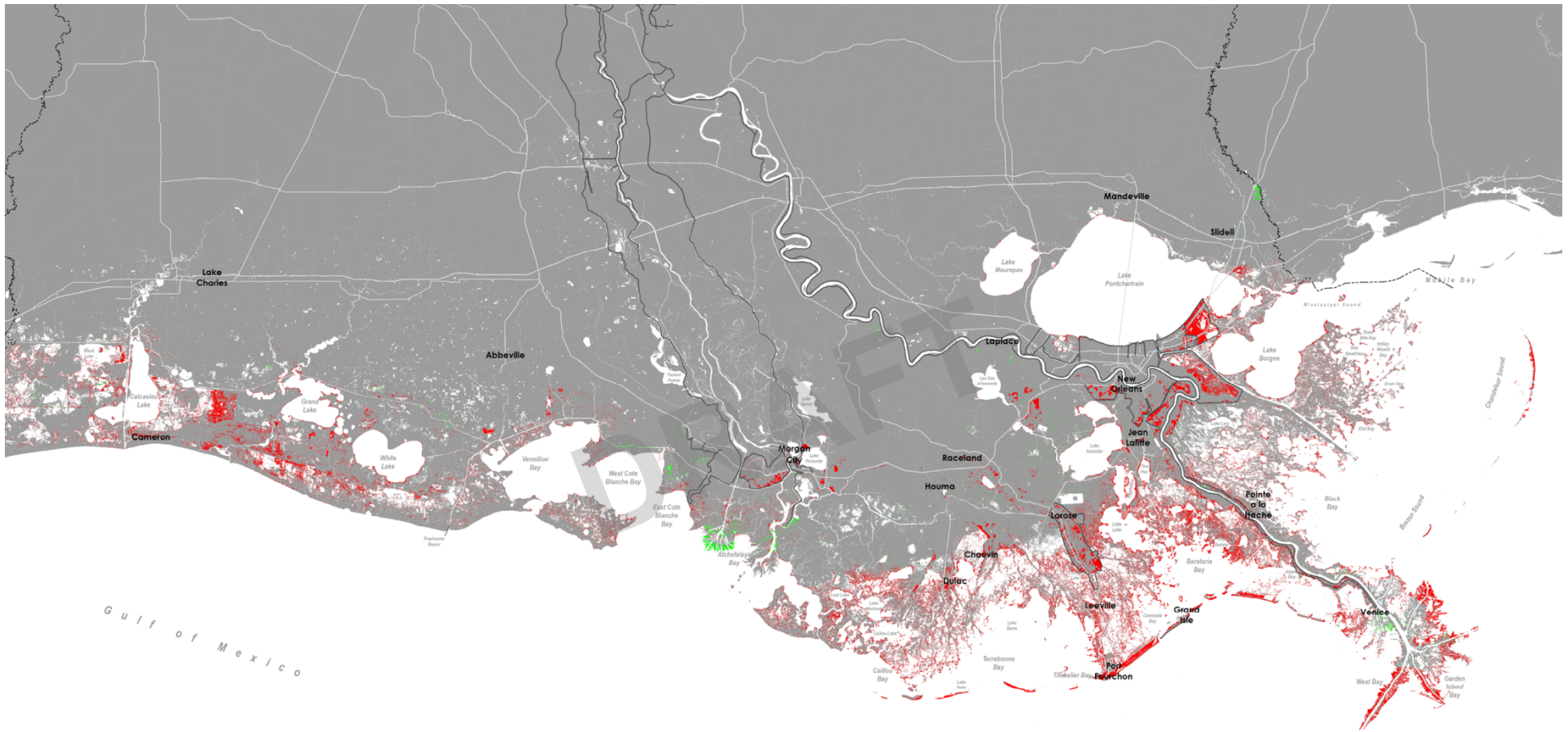
HIGH



PREDICTED LAND CHANGE FUTURE WITHOUT ACTION - YEAR 10, HIGH SCENARIO

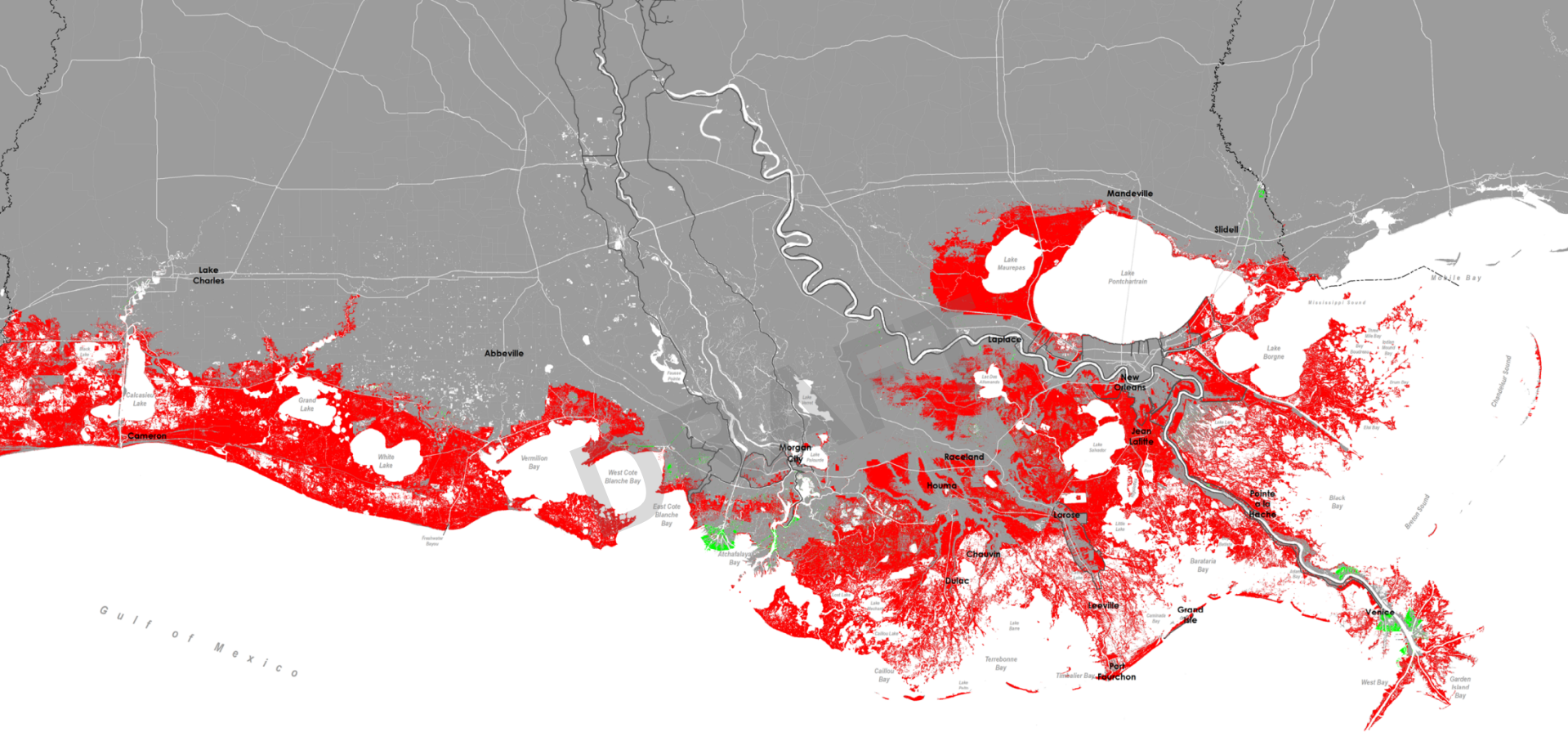


PREDICTED LAND CHANGE FUTURE WITHOUT ACTION - YEAR 20, HIGH SCENARIO

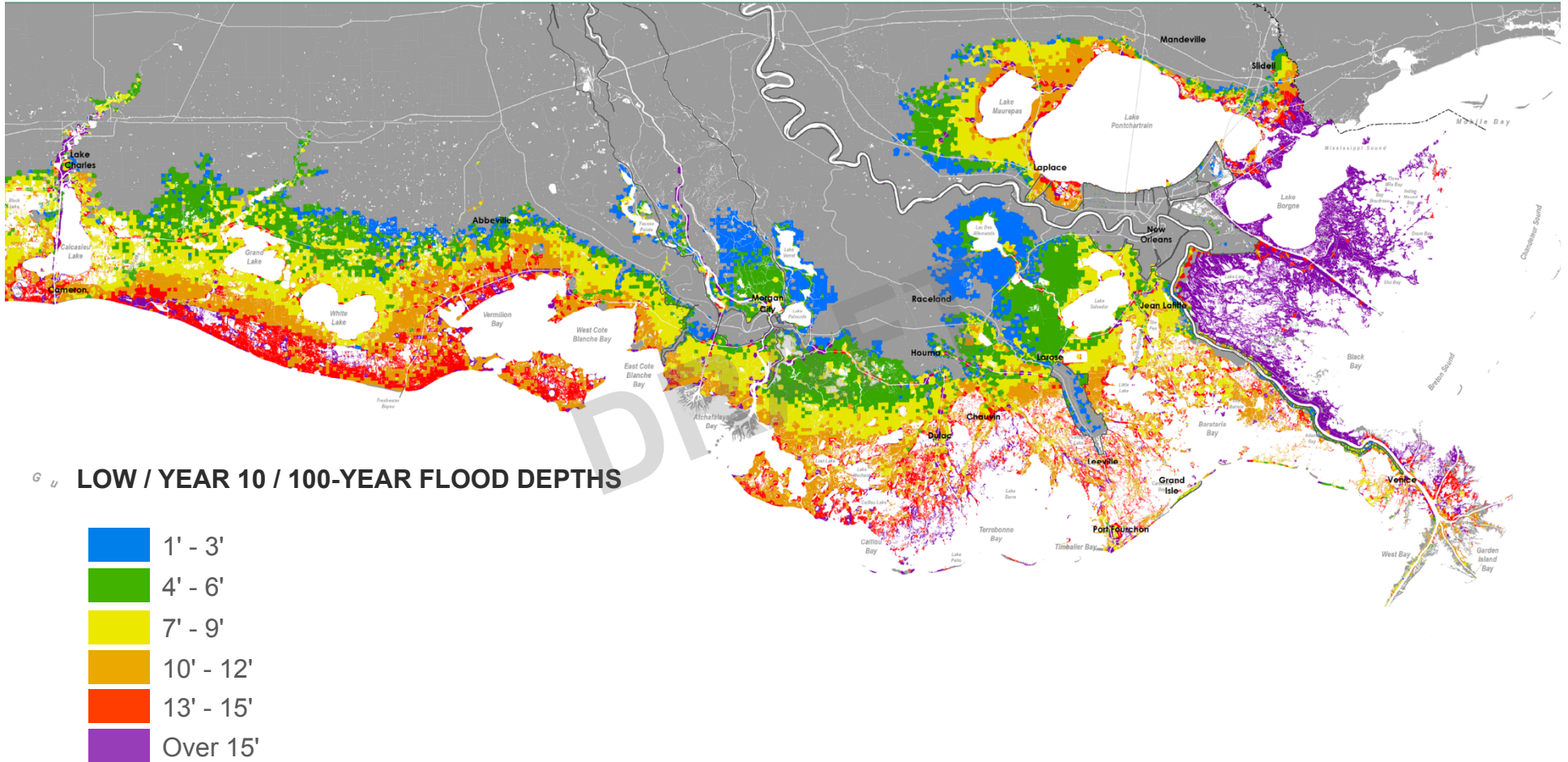


PREDICTED LAND CHANGE

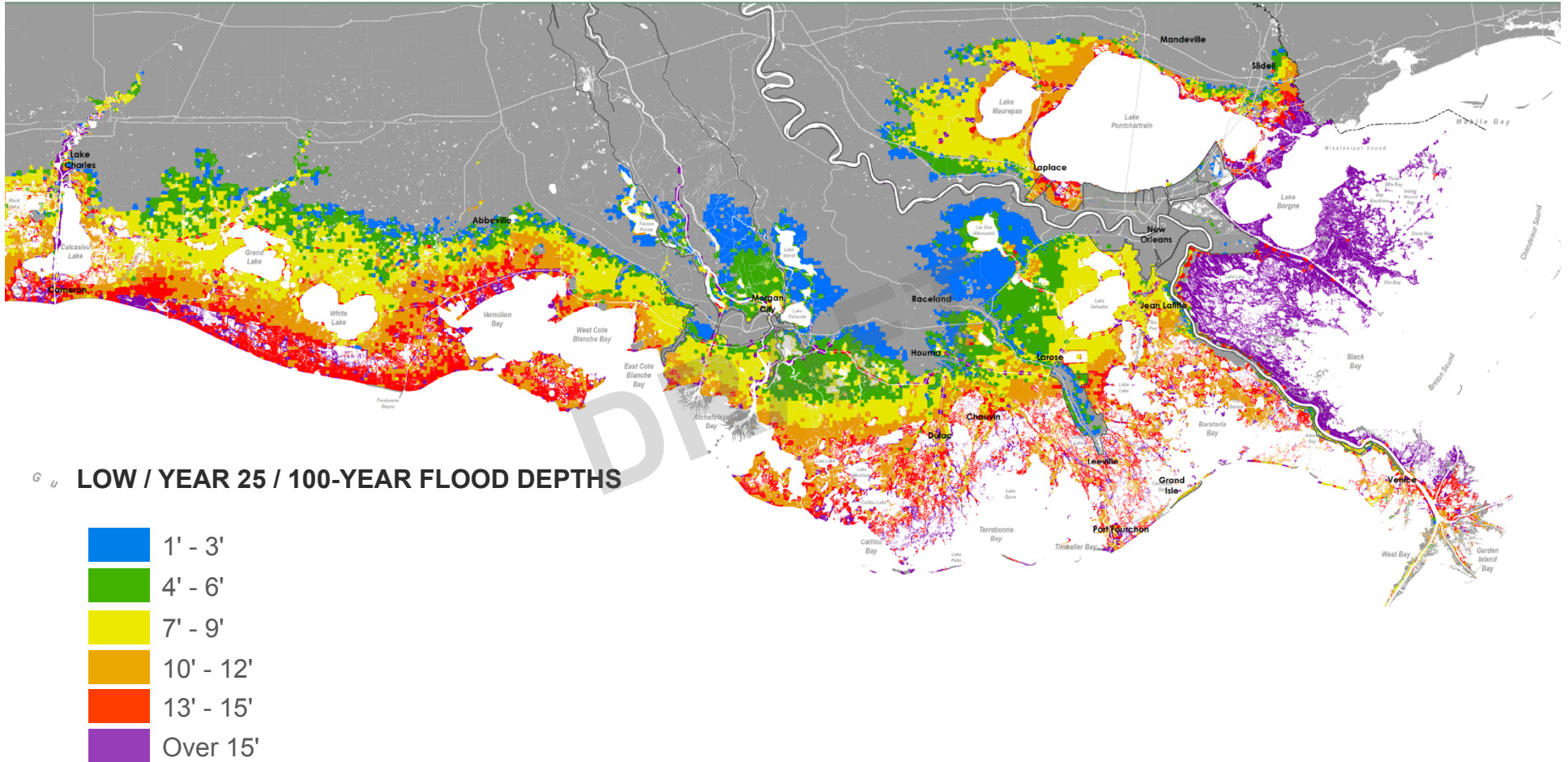
FUTURE WITHOUT ACTION - YEAR 50, HIGH SCENARIO



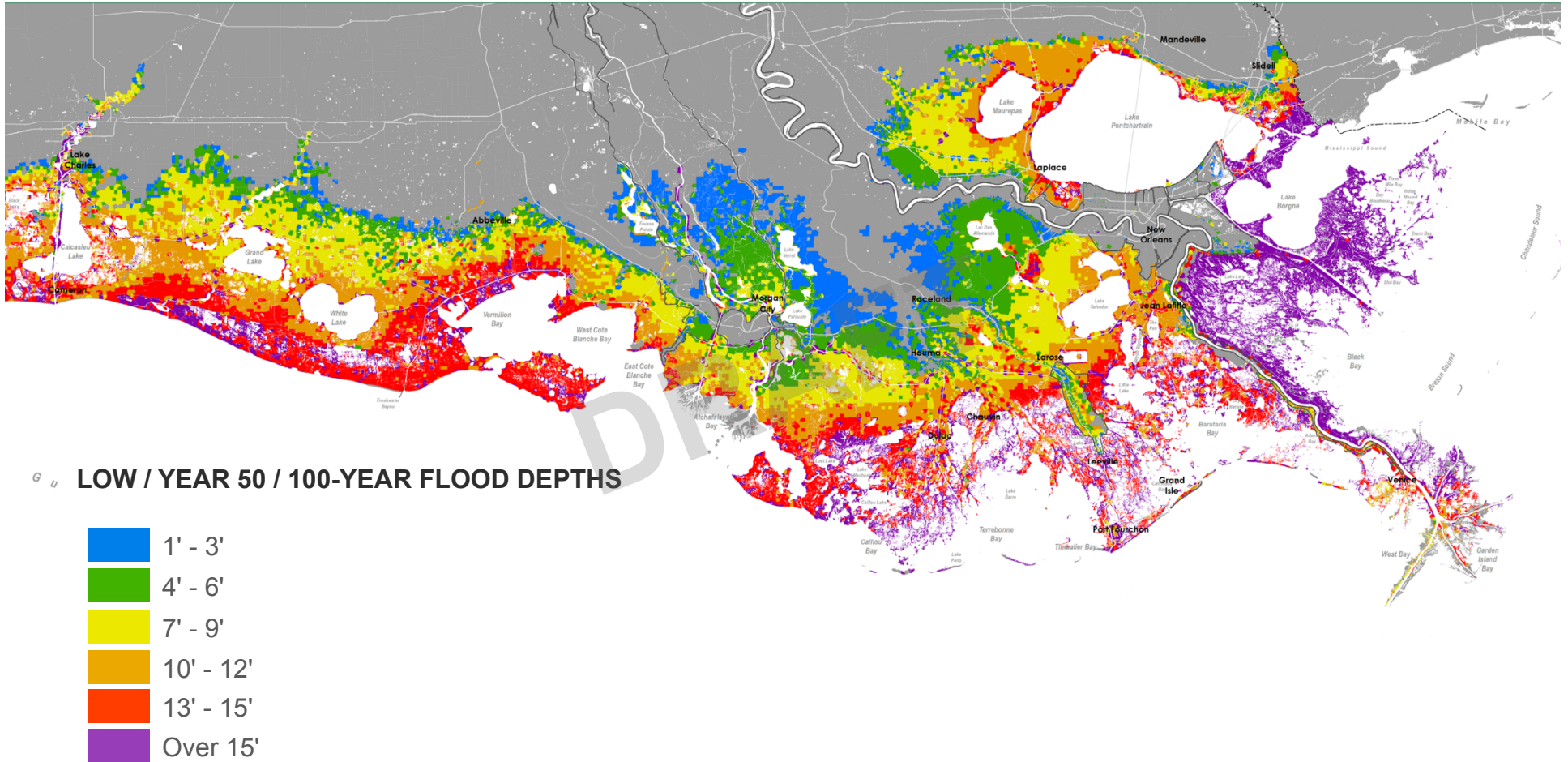
PREDICTED FLOOD DEPTHS FUTURE WITHOUT ACTION YEAR 10, LOW SCENARIO, 100-YEAR EVENT



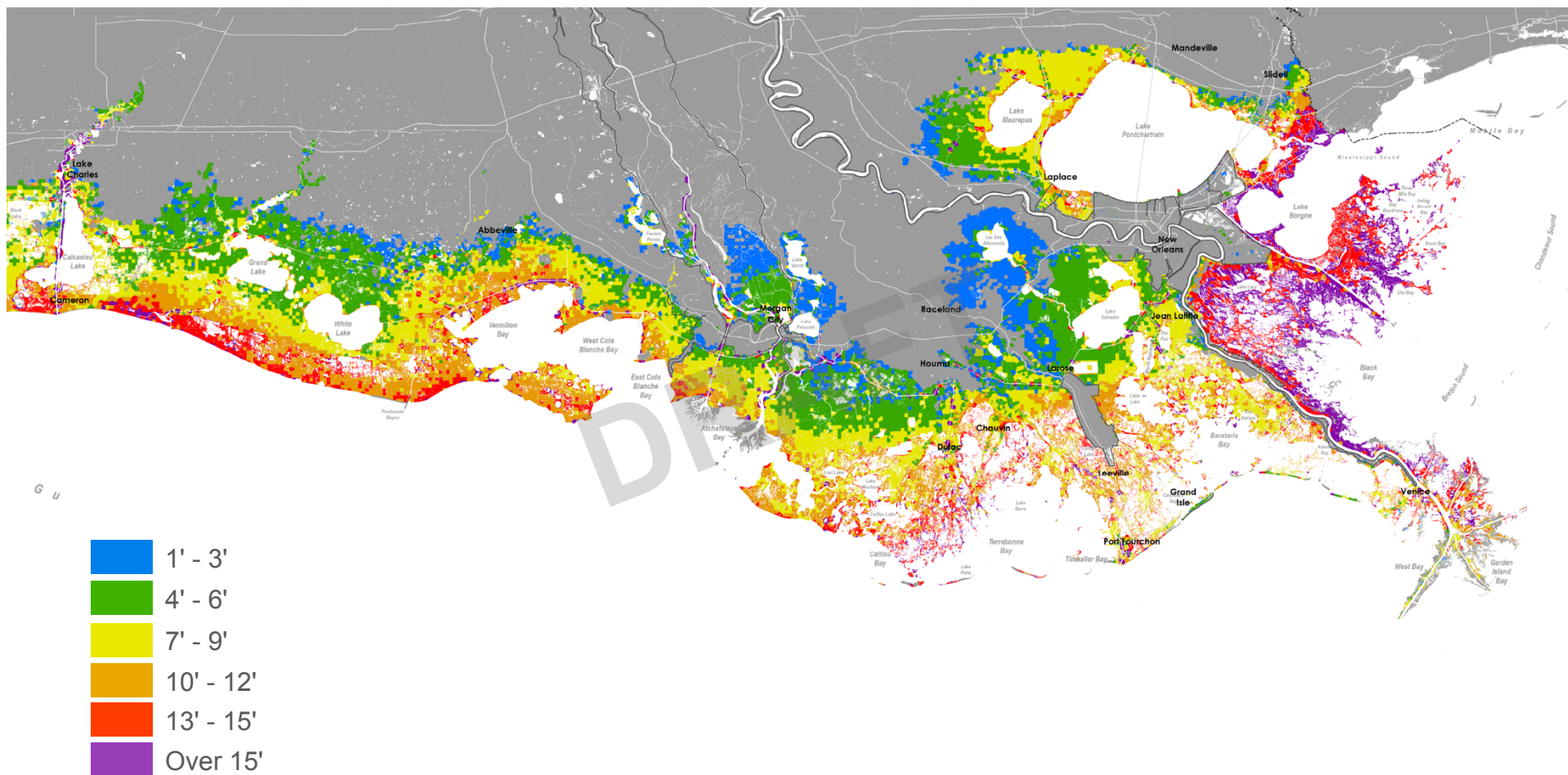
PREDICTED FLOOD DEPTHS FUTURE WITHOUT ACTION YEAR 25, LOW SCENARIO, 100-YEAR EVENT



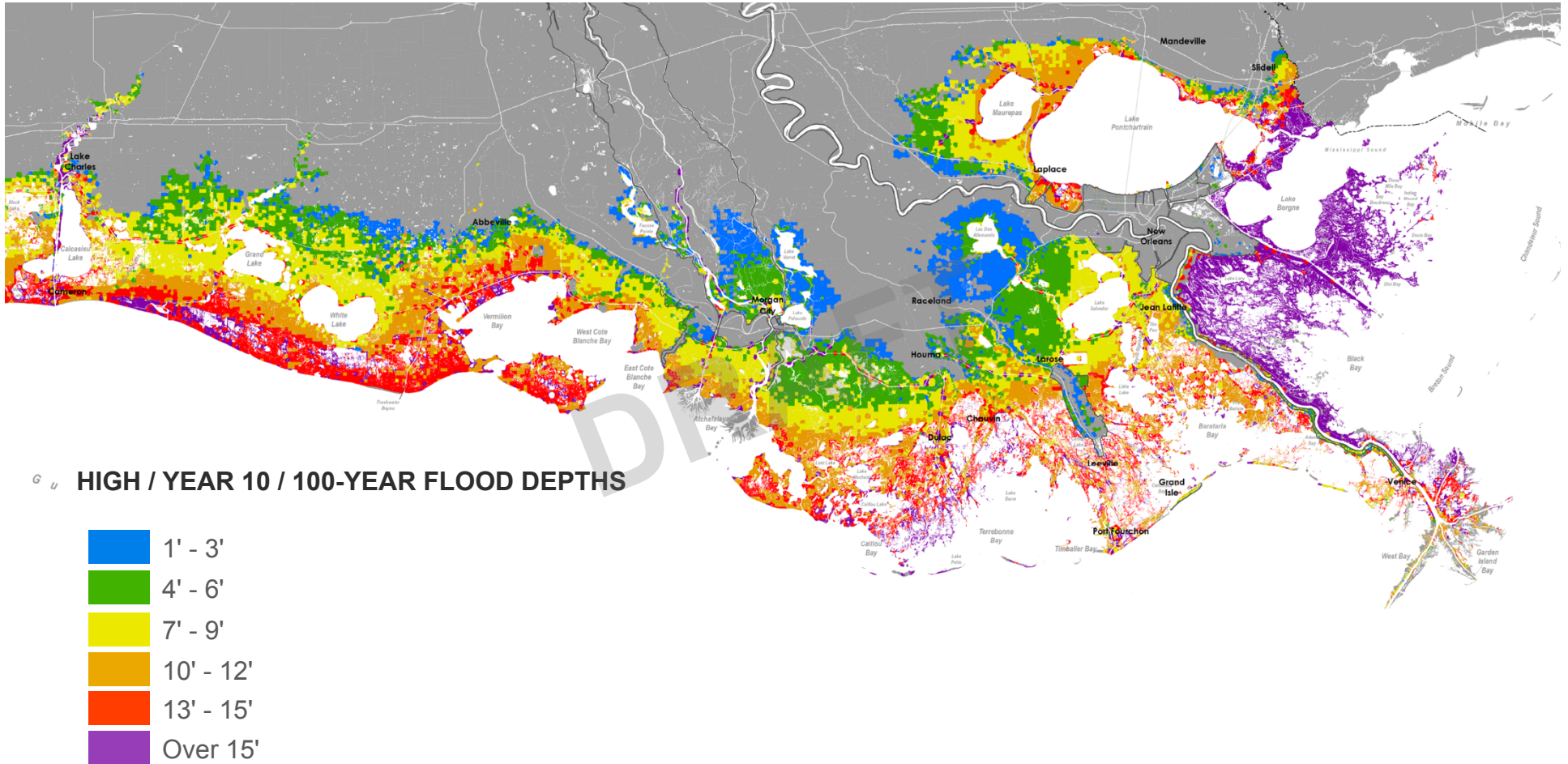
PREDICTED FLOOD DEPTHS FUTURE WITHOUT ACTION YEAR 50, LOW SCENARIO, 100-YEAR EVENT



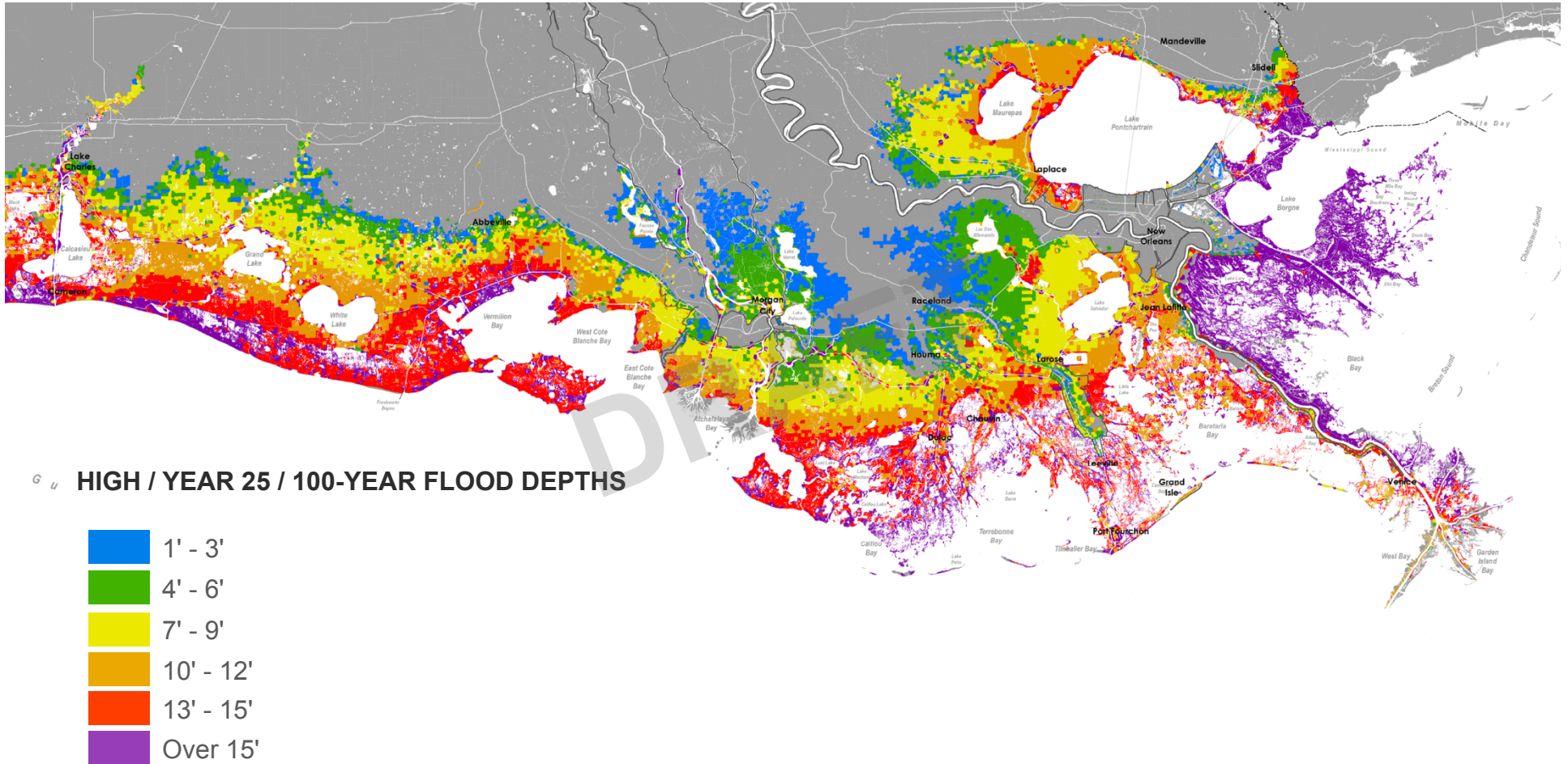
PREDICTED FLOOD DEPTHS INITIAL CONDITION 100-YEAR EVENT



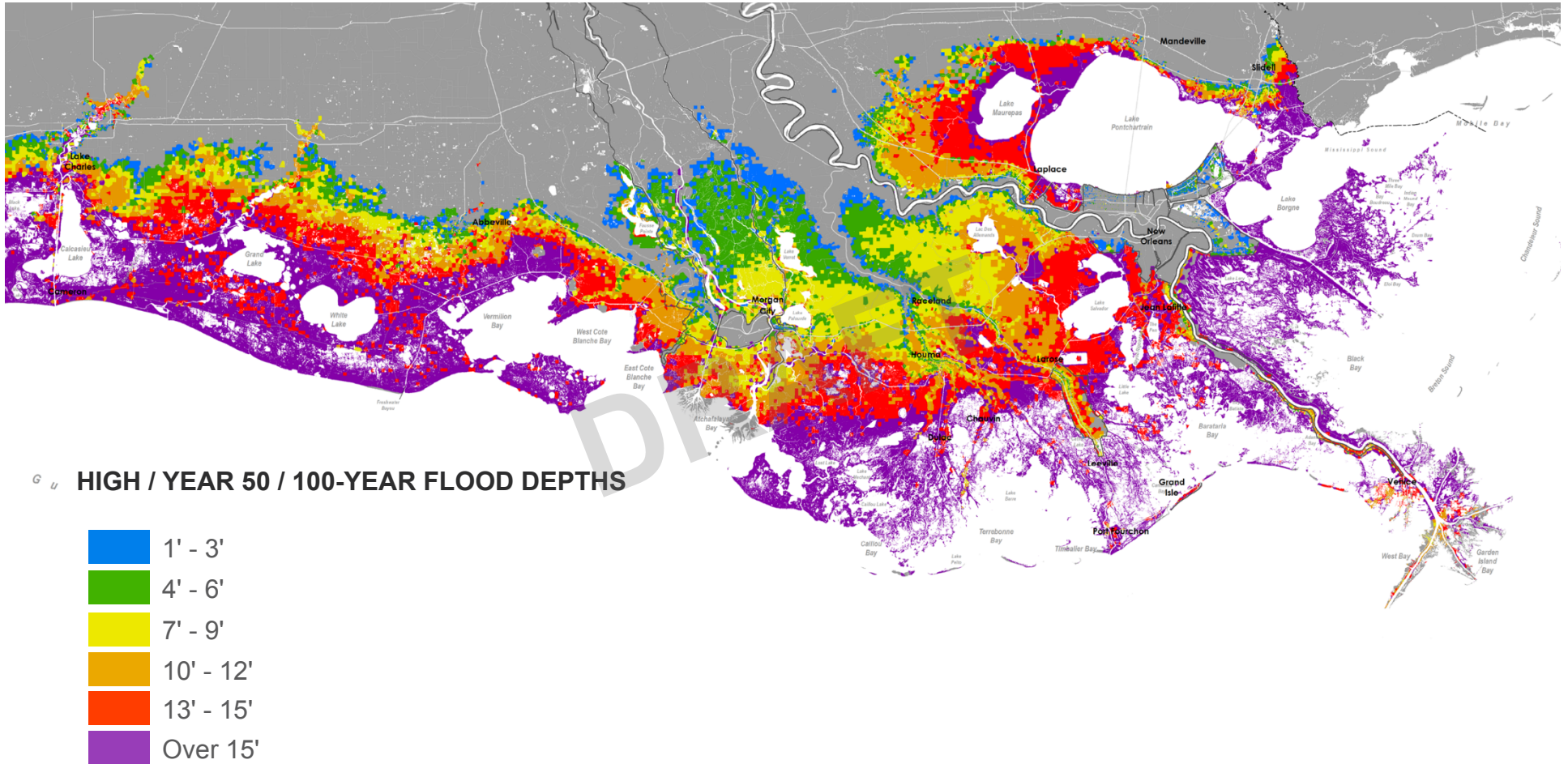
PREDICTED FLOOD DEPTHS FUTURE WITHOUT ACTION YEAR 10, HIGH SCENARIO, 100-YEAR EVENT



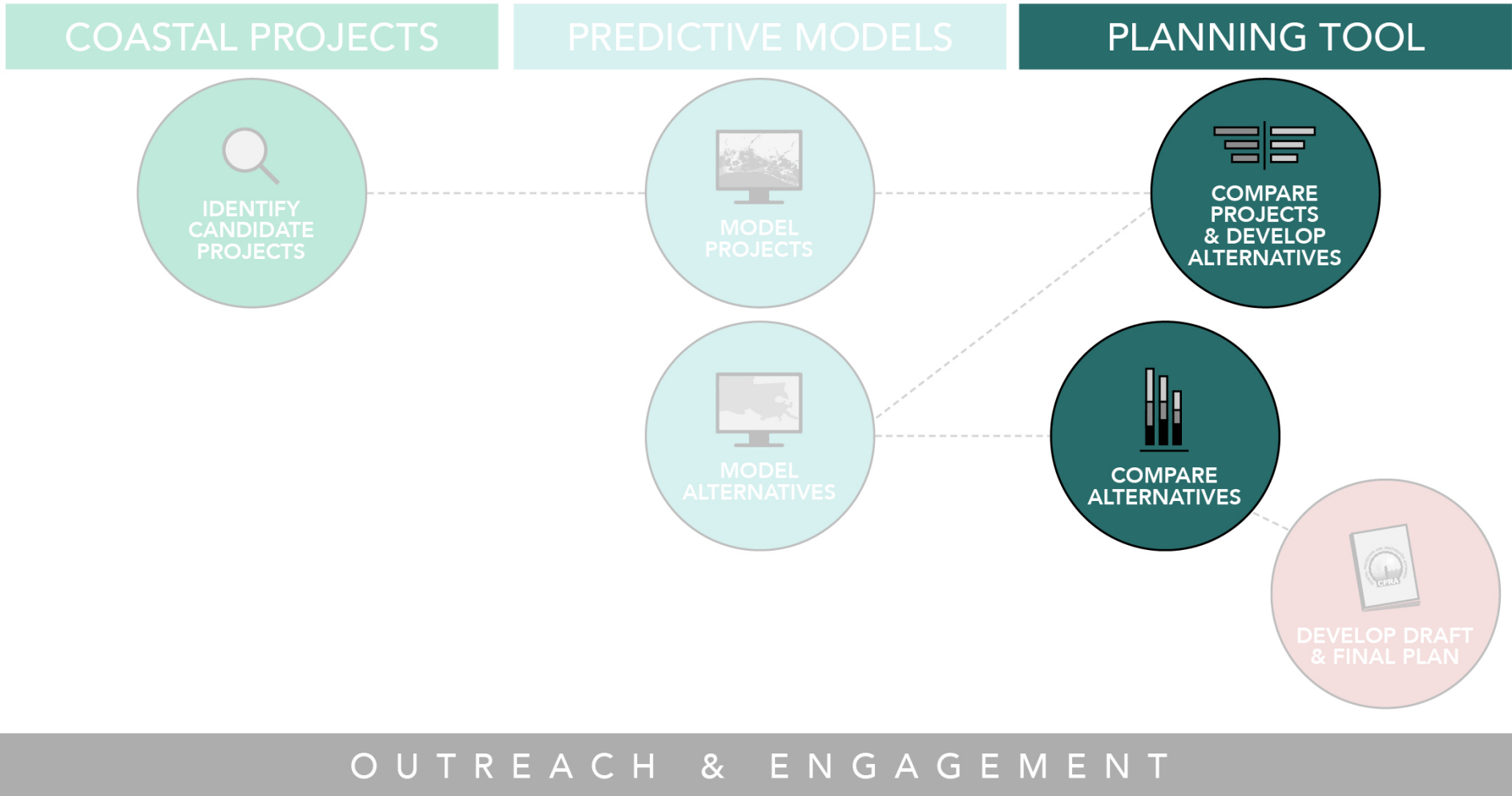
PREDICTED FLOOD DEPTHS FUTURE WITHOUT ACTION YEAR 25, HIGH SCENARIO, 100-YEAR EVENT



PREDICTED FLOOD DEPTHS FUTURE WITHOUT ACTION YEAR 50, HIGH SCENARIO, 100-YEAR EVENT



DEVELOPING THE COASTAL MASTER PLAN



PLANNING FRAMEWORK

PLANNING TOOL

DECISION DRIVERS



REDUCING FLOOD RISK



BUILDING LAND

CONSTRAINTS



SEDIMENT



FUNDING

METRICS

COMMUNITY METRICS



AGRICULTURAL COMMUNITIES



FLOOD PROTECTION OF STRATEGIC ASSETS



OIL & GAS COMMUNITIES



SOCIAL VULNERABILITY



FLOOD PROTECTION OF HISTORIC PROPERTIES



NAVIGATION



TRADITIONAL FISHING COMMUNITIES

ENVIRONMENTAL METRICS



ALLIGATOR



CRAWFISH



OYSTERS



SUSTAINABILITY OF LAND



BLUE CRAB



FRESHWATER FISHERIES



SALTWATER FISHERIES



USE OF NATURAL PROCESSES



BROWN PELICAN



NITROGEN UPTAKE



SHRIMP



WATERFOWL

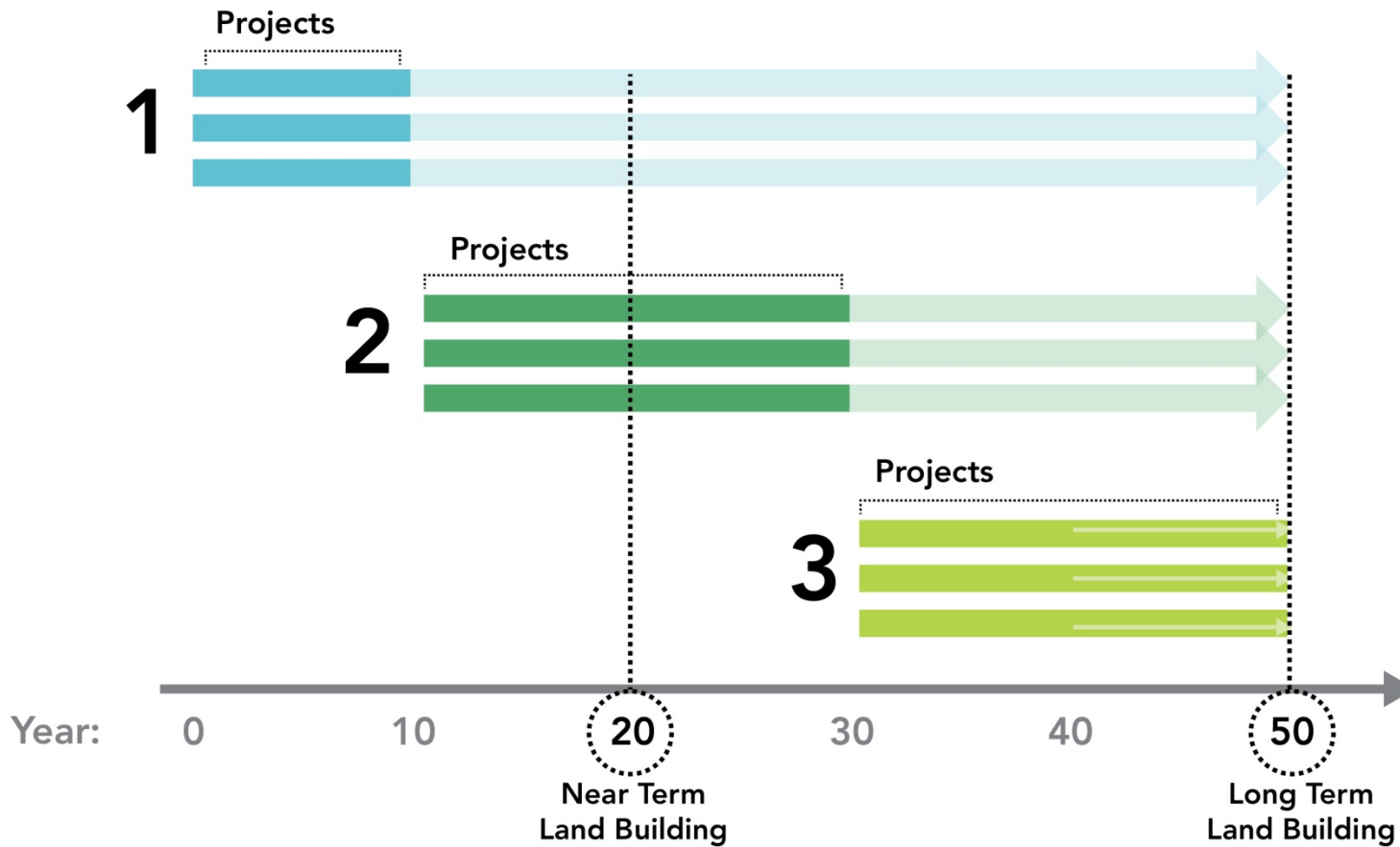
PLANNING TOOL IDENTIFIES GROUPS OF PROJECTS (ALTERNATIVES)

- Maximizes key **decision drivers**:
 - Near-term (year 20) Land Area
 - Long-term (year 50) Land Area
 - Mid-term (year 25) Expected Annual Damage Reduction
 - Long-term (year 50) Expected Annual Damage Reduction
- Consistent with key **constraints**:
 - Funding availability
 - Available sediment
 - Project compatibilities
- For a specified **Environmental Scenario**

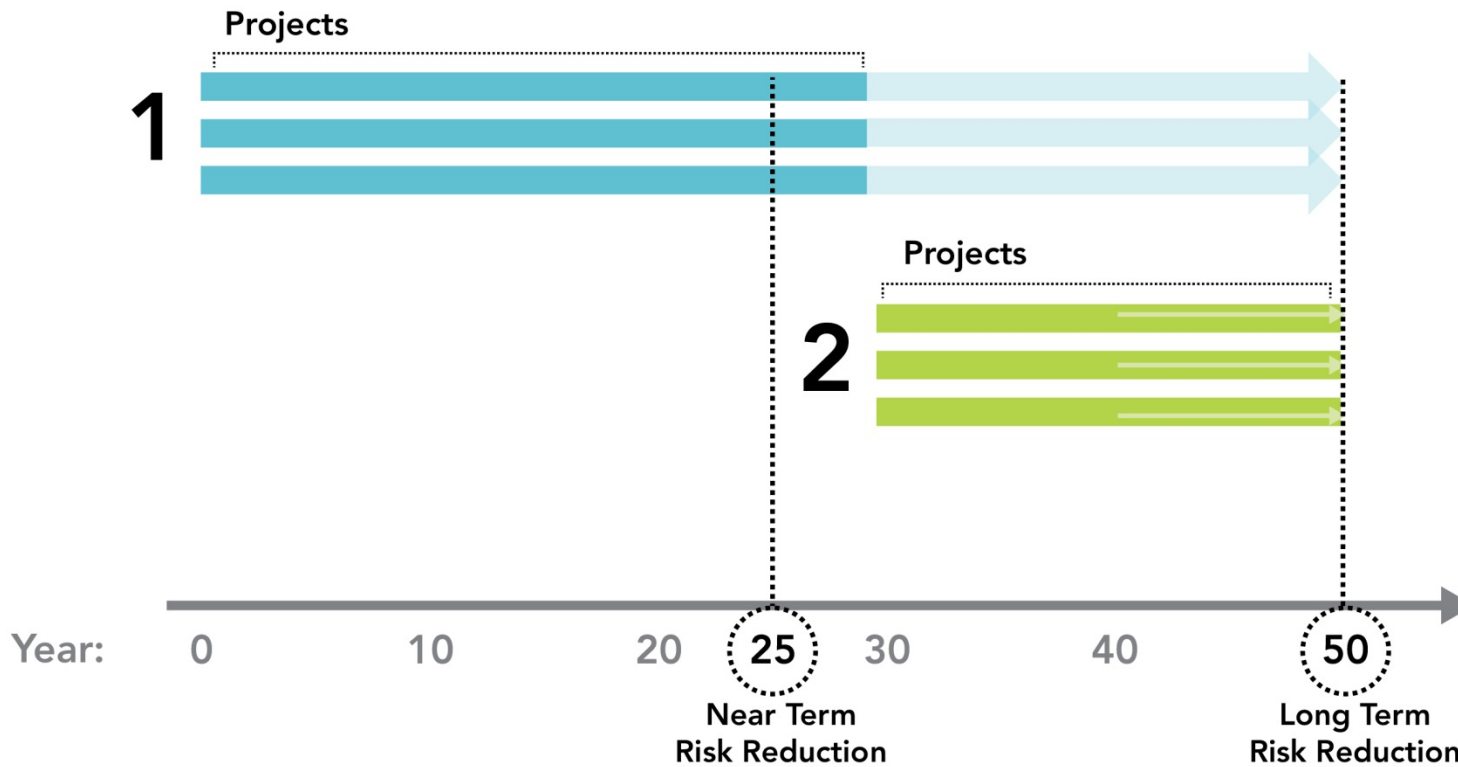
Maximizes
Outcomes

Within
Constraints

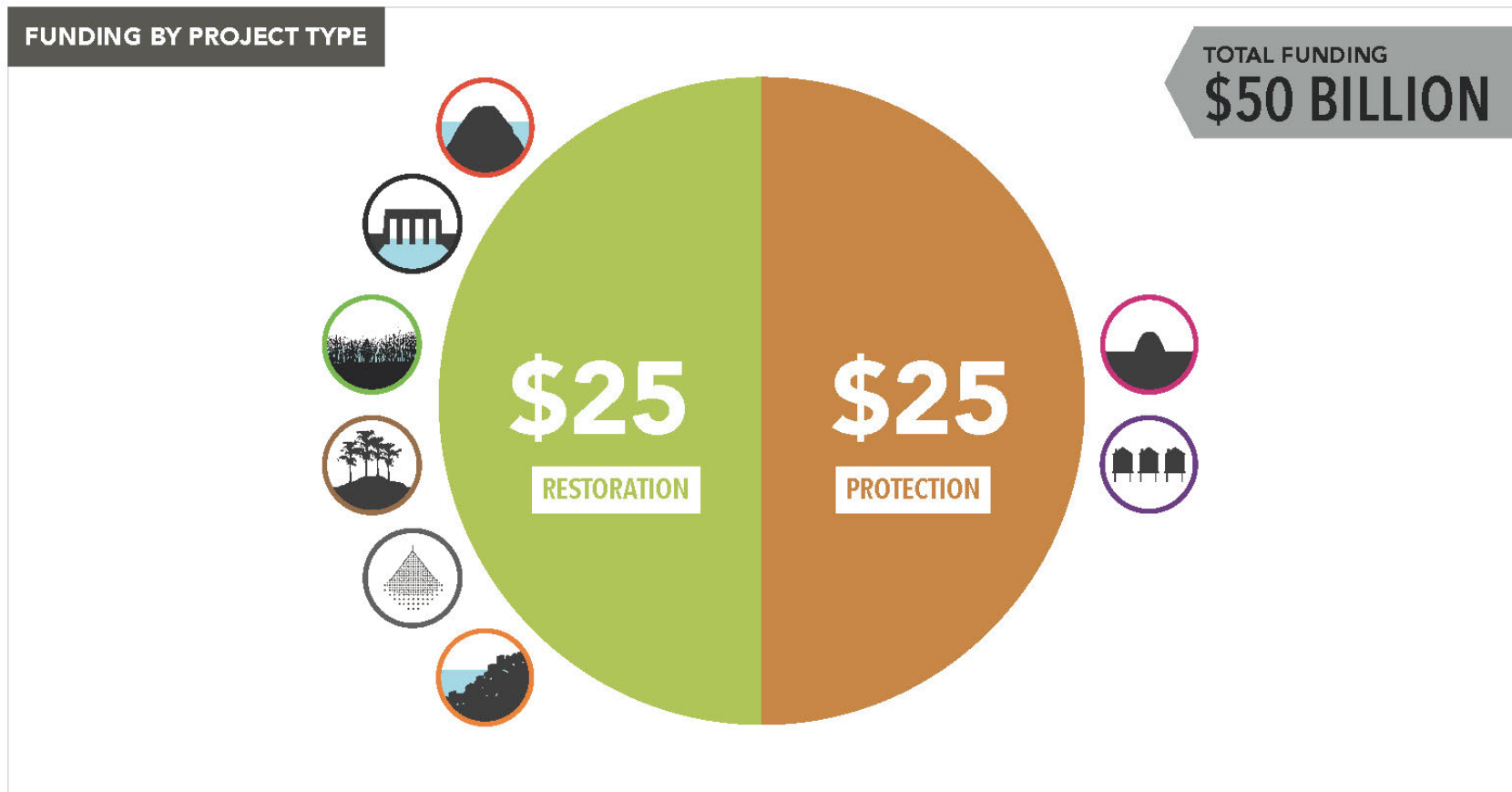
RESTORATION IMPLEMENTATION PERIODS = 3



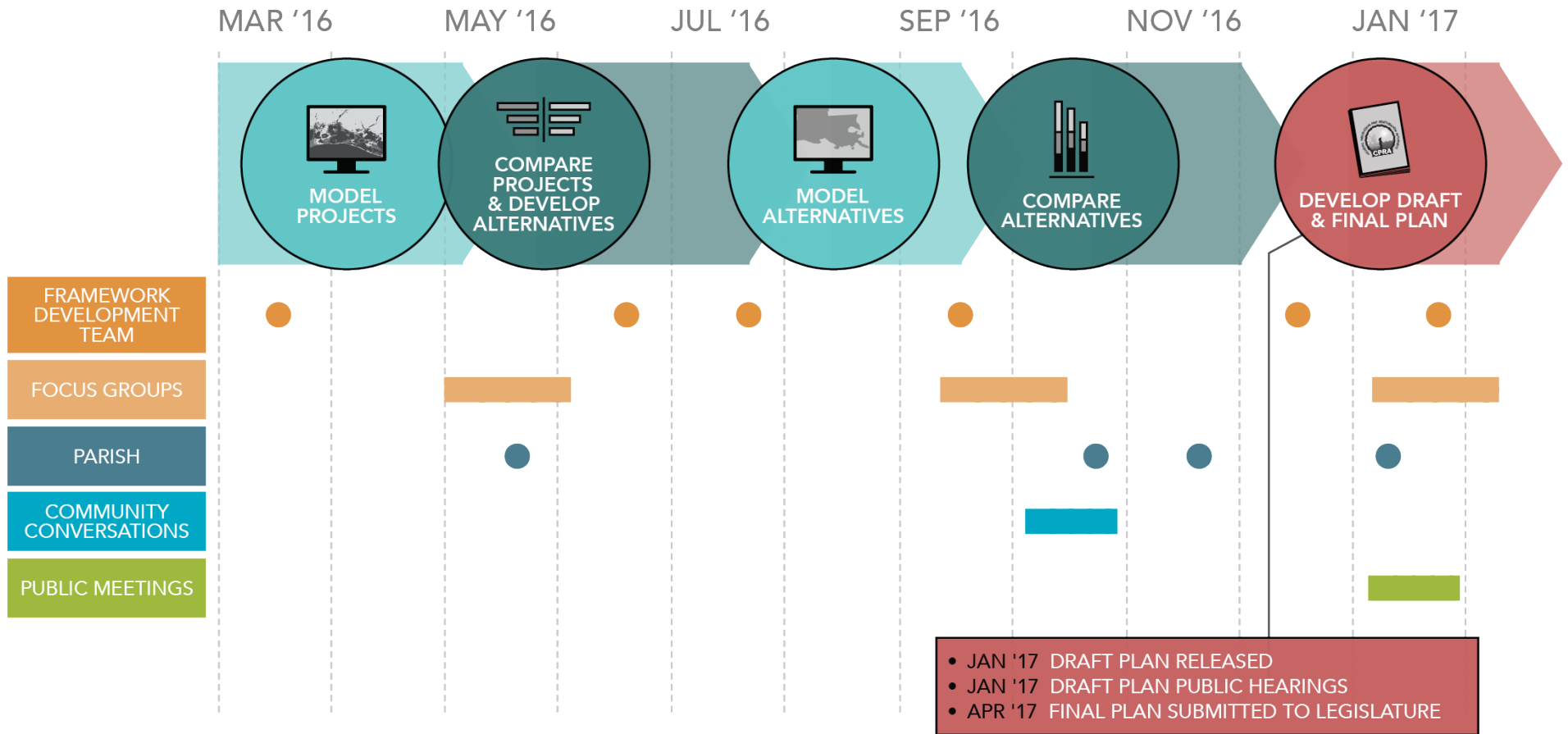
RISK REDUCTION IMPLEMENTATION PERIODS = 2



A \$50 BILLION, 50 YEAR PLAN



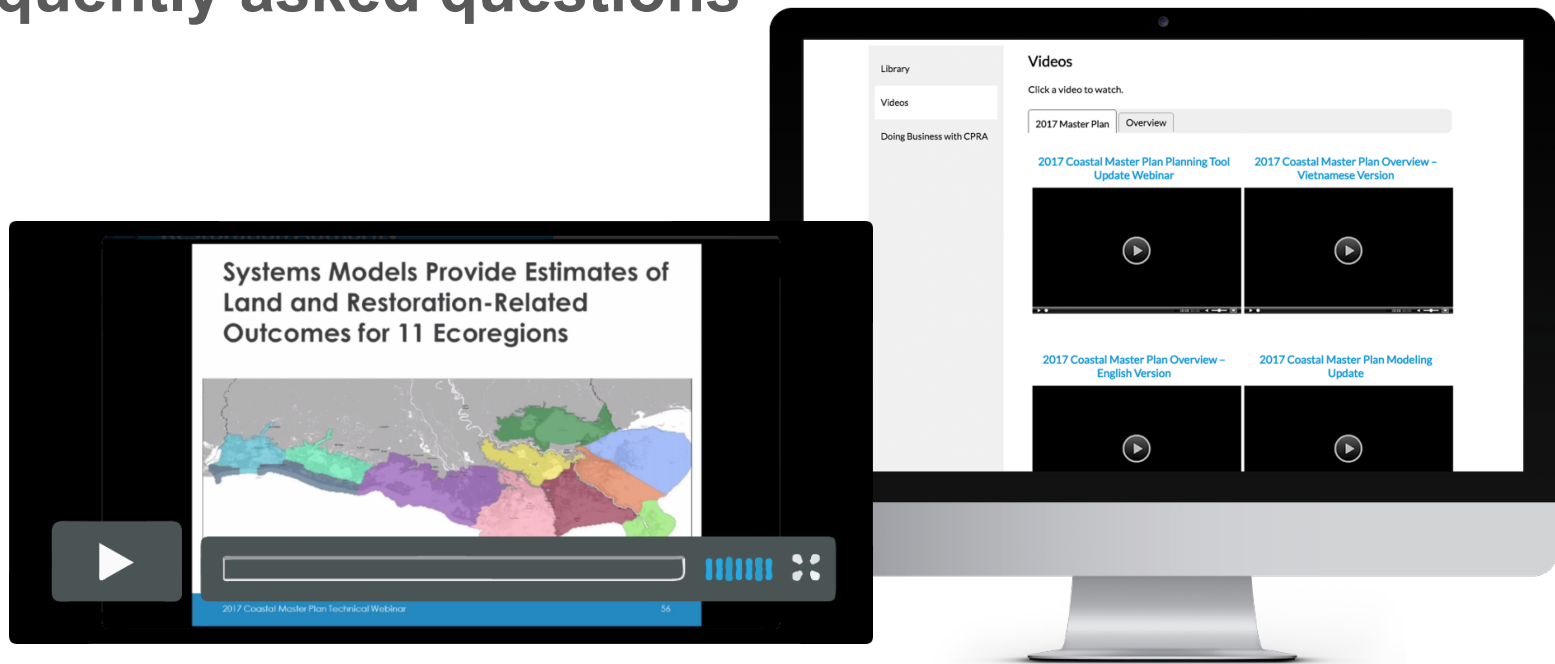
MASTER PLAN TIMELINE



OUTREACH & ENGAGEMENT

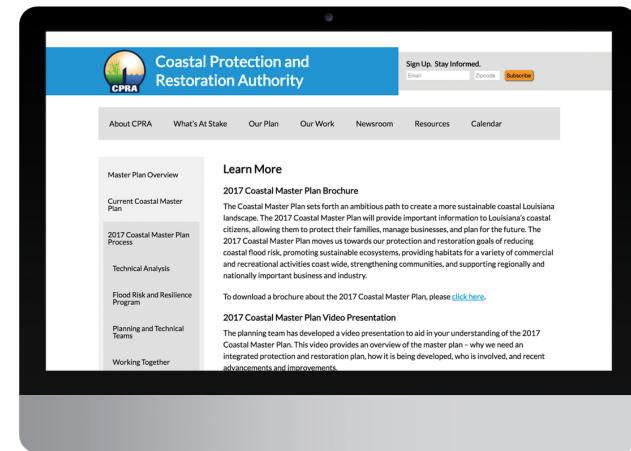
ONLINE RESOURCES

- 2017 Coastal Master Plan brochure
- 2017 Coastal Master Plan videos in English and Vietnamese
- Frequently asked questions



HOW TO GET INVOLVED?

- Visit our website:
coastal.la.gov
- Request a presentation
or meeting:
masterplan@la.gov
- Attend public and
community meetings





2017 COASTAL MASTER PLAN



THANK YOU